

The Westbrook
3,935 sq.ft.



Elevation "E"

Copyright ©2007 Parkview Homes, All Rights Reserved.



PARKVIEW HOMES

"A Family Tradition For More Than 75 Years"

The WESTBROOK

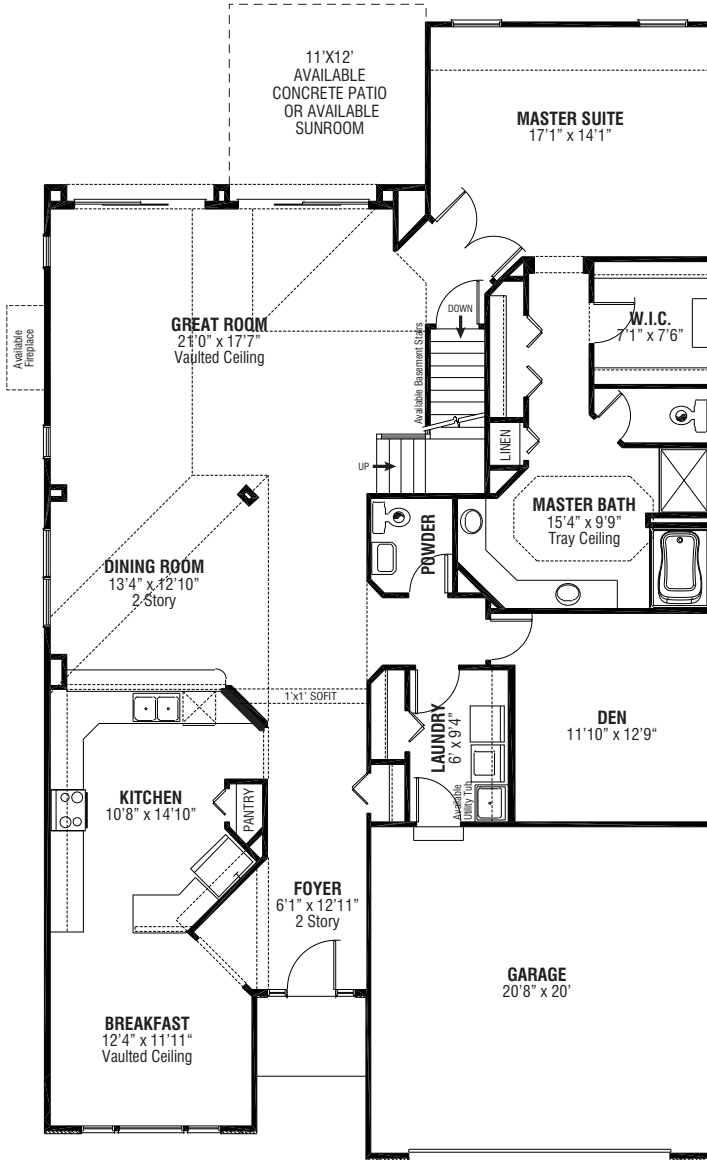
BASE PRICE _____

SQ. FT. 3,935

FIRST FLOOR PLAN

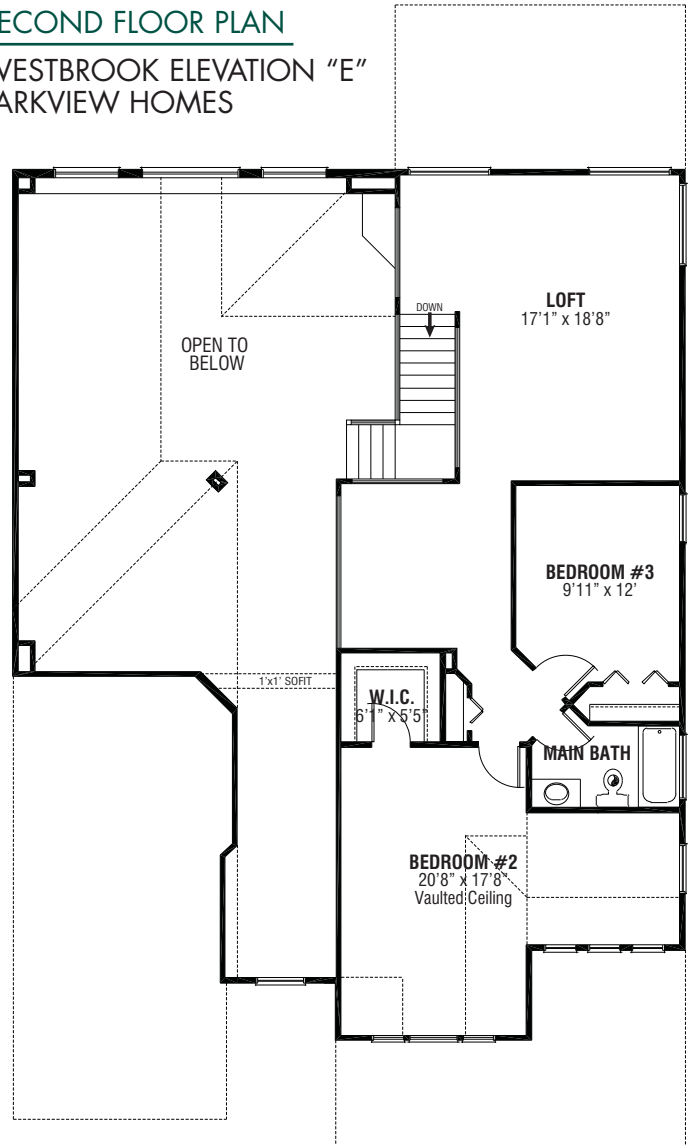
WESTBROOK ELEVATION "E"
PARKVIEW HOMES

Floor Plans and Square Footage Vary by Elevation



SECOND FLOOR PLAN

WESTBROOK ELEVATION "E"
PARKVIEW HOMES



"A Family Tradition For More Than 75 Years"

13370 Prospect Road • Strongsville, OH 44149 • (440) 238-9440 • www.ParkviewHomes.com

Parkview Homes is committed to the constant improvement of our products. To insure that your new Parkview home is of the highest quality, we reserve the right to make product substitutions of equal or higher quality, and changes to brand names, dimensions and architectural details. This brochure is for illustrative purposes only and not part of a legal contract. Prices and specifications subject to change without notice. All square footage calculations are under roof. Copyright ©2010 Parkview Homes, All Rights Reserved. 9/19/10